

4

Setting Up Dial-In/Out Access

We describe here the steps required to configure Moxa CN2500 as a Dial-In/Out Access Server. Dial-In Access allows remote users to access the LAN, whereas Dial-Out Access allows LAN hosts to establish connections to other sites.

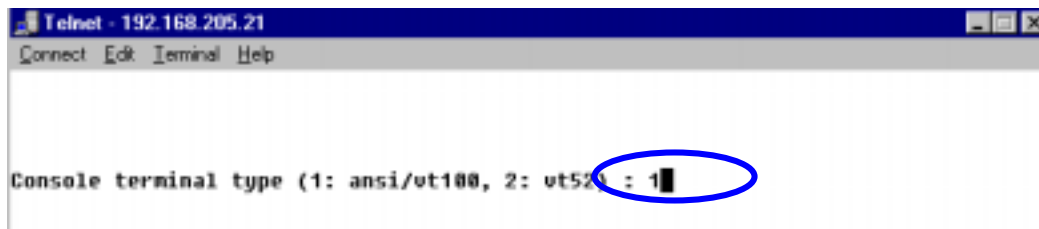
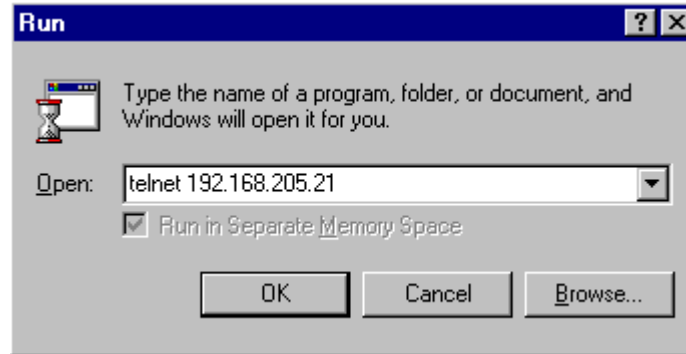
- ☐ Configuring port operation mode—PORT MENU [Mode]
 1. PPPD/PPP
 2. SLIPD/SLIP
 3. Dynamic
- ☐ Configuring port connection setting—PORT MENU [Line]
- ☐ Configuring modem initialization—PORT MENU [Modem]
- ☐ Optional welcome message—PORT MENU [Welcome_MSG]
- ☐ Optional local user information—SERVER MENU [User_table]
- ☐ Save
- ☐ Restart

Configuring port operation mode— Port Menu [Mode]

In **PORT MENU [Mode]**, you can set up CN2500's dial-in/out applications, and also specify PPP/SLIP/Dynamic settings.

1. Enter Async Server's **MAIN MENU**

Use either Telnet from a network terminal, or connect directly to Async Server with a console terminal. Choose **ansi/vt100** and press **[Enter]**. Refer to Chapter 2 if you have trouble entering **MAIN MENU**.

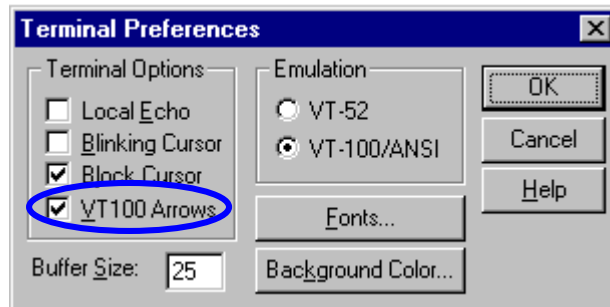
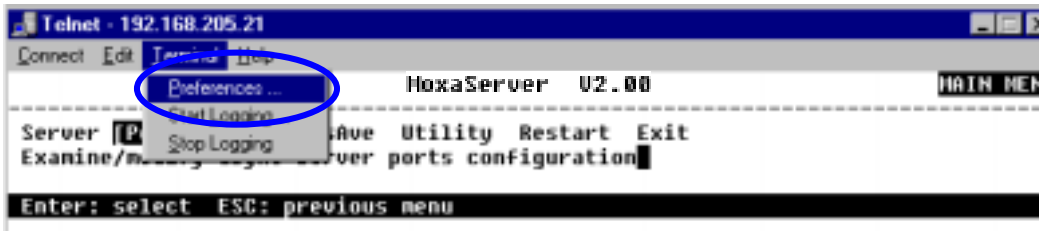


2. Below we show Async Server's **MAIN MENU**. Familiarize yourself with the cursor movement functions before we start.

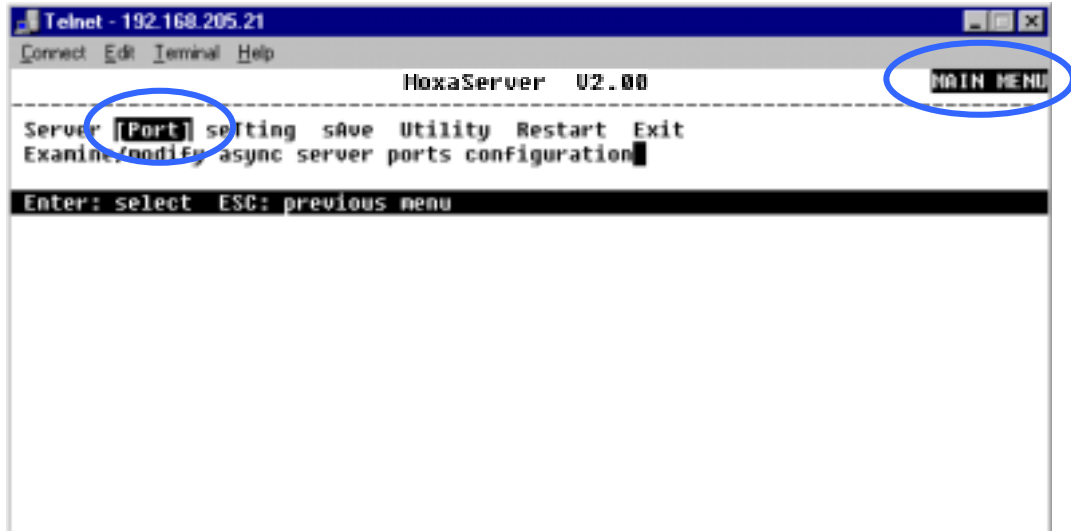
	Key
Move	[Up/Down/Left/Right] Arrow Key or [Tab] Key
Enter to next menu	[Enter] Key
Back to previous menu	[Esc] Key
Fast Key	Capital letter of the word



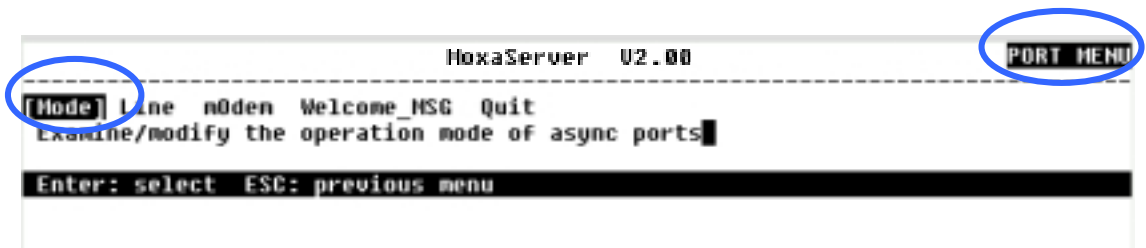
If you have problems using the arrow keys to move the cursor, click on the **Terminal** menu, choose **Preferences**, and then select **VT100 Arrows** in the **Terminal Preferences** window.



3. In **MAIN MENU**, use the arrow keys to select **Port**, and then press **[Enter]**.



4. In **PORT MENU**, select **Mode**, and then press **[Enter]**.



5. Select Application

Use the up/down arrow keys to move to the **Application** column of the corresponding dial-in/out port. We use port 5 in the example below.

```
-----
[Mode] Line m0dem Welcome_MSG Quit
Examine/modify the operation mode of async ports

ESC: back to menu  Enter: select

Port  Application      Mode      Description/more setting
01  [Device Control]  [ASPP   ]  [Async Server Proprietary Protocol]
02  [Device Control]  [ASPP   ]  [Async Server Proprietary Protocol]
03  [Device Control]  [ASPP   ]  [Async Server Proprietary Protocol]
04  [Device Control]  [ASPP   ]  [Async Server Proprietary Protocol]
05  [Device Control]  [ASPP   ]  [Async Server Proprietary Protocol]
06  [Device Control]  [ASPP   ]  [Async Server Proprietary Protocol]
07  [Device Control]  [ASPP   ]  [Async Server Proprietary Protocol]
08  [Device Control]  [ASPP   ]  [Async Server Proprietary Protocol]
09  [Device Control]  [ASPP   ]  [Async Server Proprietary Protocol]
```

6. Press [Enter] to open the pop-up application window. Use the up/down arrow keys to select **Dialin/out** and then press [Enter] again to confirm.

```
MoxaServer U2.00
-----
[Mode] Line m0dem Welcome_MSG Quit
Examine/modify the operation mode of async ports

ESC: back to menu  Enter: select

Port  Application      +-----+ption/more setting
01  [Device Control] ]| Disable | Server Proprietary Protocol]
02  [Device Control] ]| Dialin/out | Server Proprietary Protocol]
03  [Device Control] ]| Terminal | Server Proprietary Protocol]
04  [Device Control] ]| Reverse Terminal | Server Proprietary Protocol]
05  [Device Control] ]| Device Control | Server Proprietary Protocol]
06  [Device Control] ]| Multiplex | Server Proprietary Protocol]
07  [Device Control] ]| Printer | Server Proprietary Protocol]
08  [Device Control] ]| Fixed TTY | Server Proprietary Protocol]
09  [Device Control] ]| NT Real COM | Server Proprietary Protocol]
10  [Device Control] ]+-----+ Server Proprietary Protocol]
```

- Repeat step 6. for other dial-in/out ports. For example, you could set ports 1 to 8 for dial-in/out application.

```

-----
[Mode] Line m0dem Welcome_MSG Quit
Examine/modify the operation mode of async ports

ESC: back to menu  Enter: select

Port  Application      Mode      Description/more setting
01  [Dialin/out ] [DYNAMIC ] [Auto Term/SLIP/PPP identification]
02  [Dialin/out ] [DYNAMIC ] [Auto Term/SLIP/PPP identification]
03  [Dialin/out ] [DYNAMIC ] [Auto Term/SLIP/PPP identification]
04  [Dialin/out ] [DYNAMIC ] [Auto Term/SLIP/PPP identification]
05  [Dialin/out ] [DYNAMIC ] [Auto Term/SLIP/PPP identification]
06  [Dialin/out ] [DYNAMIC ] [Auto Term/SLIP/PPP identification]
07  [Dialin/out ] [DYNAMIC ] [Auto Term/SLIP/PPP identification]
08  [Dialin/out ] [DYNAMIC ] [Auto Term/SLIP/PPP identification]
09  [Device Control] [ASPP ] [Async Server Proprietary Protocol]
10  [Device Control] [ASPP ] [Async Server Proprietary Protocol]
11  [Device Control] [ASPP ] [Async Server Proprietary Protocol]
12  [Device Control] [ASPP ] [Async Server Proprietary Protocol]
13  [Device Control] [ASPP ] [Async Server Proprietary Protocol]
14  [Device Control] [ASPP ] [Async Server Proprietary Protocol]
15  [Device Control] [ASPP ] [Async Server Proprietary Protocol]
16  [Device Control] [ASPP ] [Async Server Proprietary Protocol]

```

Now that we've chosen an application mode for each serial port, we'll explore more dial-in/out protocol settings. The two most widely used protocols in dial-up networking are PPP (Point to Point Protocol) and SLIP (Serial Line Internet Protocol). Although SLIP was the first dial-up networking protocol to be used, PPP is the most popular Internet protocol in use today. Besides PPP and SLIP, Async Server also provides Dynamic mode, which automatically detects whether PPP, SLIP, or Terminal mode is being used.

Set PPP/SLIP according to your dial-in users' requests or dial-out ISP specifications.

PPPD/PPP Mode

PPPD (PPP on demand) is used for dial-in services since it provides PPP services only when receiving a request from a remote PC. PPP provides standard PPP services for both dial-in and dial-out.

1. Move the cursor to the **Mode** column of the corresponding port, and then press [Enter] to see five mode options for dial-in/out applications.
2. Select **PPPD** for dial-in services only, or **PPP** for both dial-in/out services.

```

MoxaServer  U2.00
-----
[Mode] Line m0dem Welcome_MSG Quit
Examine/modify the operation mode of async ports
ESC: back to menu  Enter: select
Port  Application      Mode  | DYNAMIC | or/more setting
01    [Dialin/out  ]  [PPP  ]  PPP      [Point Protocol  ]
02    [Dialin/out  ]  [SLIP ]  SLIP     [Line Internet Protocol  ]
03    [Device Control]  [ASPP ]  SLIPD   [rver Proprietary Protocol]
04    [Device Control]  [ASPP ]  +-----+rver Proprietary Protocol]
  
```

3. Move the cursor to the **Description/more setting** column, and then press [Enter] to open the setting window.

```

MoxaServer  U2.00
-----
[Mode] Line m0dem Welcome_MSG Quit
Examine/modify the operation mode of async ports
ESC: back to menu  Enter: select
Port  Application      Mode  | Description/more setting
01    [Dialin/out  ]  [PPPD ]  [PPP mode for in-coming only ]
02    [Device Control]  [ASPP ]  Async Server Proprietary Protocol]
  
```

```

| Destination IP addr : [  ] |
| Source IP address  : [  ] |
| IP netmask         : [  ] |
| TCP/IP Compression : [yes] |
| Inactivity time    : [ 0m] |
| Link quality report : [yes] |
| Outgoing PAP ID    : [  ] |
| PAP password       : [  ] |
| Incoming PAP check : [none ] |
  
```

Setting Up Dial-in/out Access 4-7

4. PPPD/PPP
Description/More
Setting window

Setting	Value	Notes	Necessity
Destination IP addr	IP address for the remote Dial-in / Dial-out user	DO assign an IP address for the remote user.	YES
Source IP address	IP address for the port	Async Server automatically assigns an IP address for the port. Recommend: Blank	Optional
IP netmask	IP netmask	Async Server automatically assigns "255.255.255.255" IP netmask for the port. Recommend: Blank	Optional
TCP/IP Compression	YES/NO	Depends on remote user's application request for compression.	Optional
Inactivity time	0/5/10/20/30/60 minutes	Idle time setting for disconnection 0 min means no disconnection	Optional
Link quality report	YES/NO	If you have software to collect the Link quality information, choose YES.	Optional
Outgoing PAP ID	ID	Dial out user/account ID information	Optional
PAP password	Password	Dial out user/account password	Optional
Incoming PAP check	None/local/server	PAP/CHAP check for connected users None: No authentication is required Local: Check ID according to User_table in SERVER MENU . You will need to set user's information later in this chapter. Server: Check ID according to external RADIUS Server. Refer to Appendix C for RADIUS setup.	Optional

5. Repeat the above steps to set all PPP/PPPD ports.
6. Press **[Esc]** to go back to **PORT MENU**.

SLIPD/SLIP Mode

Moxa Async Server supports SLIP (Serial Line Internet Protocol), and SLIPD (for Dial-in services only).

1. Move the cursor to the **Mode** column of the corresponding port, and press **[Enter]** to see five modes for dial-in/out applications.

```
MoxaServer V2.00
-----
[Mode] Line m0dem Welcome_MSG Quit
Examine/modify the operation mode of async ports

ESC: back to menu  Enter: select
+-----+
Port Application      Mode      | DYNAMIC | on/more setting
01 [Dialin/out ] [PPP ] | PPP | [-Point Protocol ]
02 [Dialin/out ] [SLIP ] | PPPD | ine Internet Protocol ]
03 [Device Control] [ASPP ] | SLIP | rver Proprietary Protocol ]
04 [Device Control] [ASPP ] | SLIPD | rver Proprietary Protocol ]
05 [Device Control] [ASPP ] | ASPP | rver Proprietary Protocol ]
06 [Device Control] [ASPP ] | ASPP | Async Server Proprietary Protocol ]
```

2. Select **SLIPD** for dial-in services or **SLIP** for both dial-in/out services.
3. Move the cursor to the **Description/more setting** column, and then press **[Enter]** to open the setting window.

```
MoxaServer V2.00
-----
[Mode] Line m0dem Welcome_MSG Quit
Examine/modify the operation mode of async ports

ESC: back to menu  Enter: select
+-----+
Port Application      Mode      | Description/more setting
01 [Dialin/out ] [PPP ] | [-Point-to-Point Protocol ]
02 [Dialin/out ] [SLIP ] | [Serial Line Internet Protocol ]
03 [Device Control] [ASPP ] | [Async Server Proprietary Protocol ]

+-----+
| Destination IP addr : [ ] |
| Source IP address  : [ ] |
| IP netmask         : [ ] |
| TCP/IP Compression : [no ] |
| Inactivity time    : [ 0m] |
+-----+
Setting Up Dial-in/out Access 4-9
```

4. SLIPD/SLIP
Description/More
Setting window

Setting	Value	Notes	Necessity
Destination IP addr	IP address for the remote dial-in/out user	DO assign an IP address for the remote user.	YES
Source IP address	IP address for the port	Async Server automatically assigns IP address for the port. Recommend: Blank	Optional
IP netmask	IP netmask	Async Server automatically assigns "255.255.255.255" IP netmask for the port. Recommend: Blank	Optional
TCP/IP Compression	YES/NO	Depends on remote user's application request for compression.	Optional
Inactivity time	0/5/10/20/30/60 minutes	Idle time setting for auto-disconnection 0 min means no disconnection	Optional

5. Repeat the above steps to set all **SLIPD/SLIP** ports.
6. Press **[Esc]** to go back to **PORT MENU**.

Dynamic Mode

Dynamic mode integrates PPPD/SLIPD/Terminal dial-in services. Dynamic mode automatically detects which remote connection mode is being used, and provides corresponding services. You can further enable/disable PPP/SLIP/Terminal services by using **description/more setting**.

1. Move the cursor to the **Mode** column of the corresponding port, and then press **[Enter]** to see five mode options for dial in/out applications.
2. Select **Dynamic**

```
MoxaServer U2.00
-----
[Mode] Line m0dem Welcome_MSG Quit
Examine/modify the operation mode of async ports
ESC: back to menu Enter: select

Port Application Mode +-----+on/more setting
01 [Dialin/out ] [PPP ] [ DYNAMIC ] [-Point Protocol ]
02 [Dialin/out ] [SLIP ] [ PPP ] [ne Internet Protocol ]
03 [Dialin/out ] [DYNAMIC ] [ PPPD ] [m/SLIP/PPP identification]
04 [Device Control] [ASPP ] [ SLIP ] [rver Proprietary Protocol]
05 [Device Control] [ASPP ] [ SLIPD ] [rver Proprietary Protocol]
06 [Device Control] [ASPP ] [+-----+rver Proprietary Protocol]
```

3. Move the cursor to the **Description/more setting** column, and then press **[Enter]** to open the setting window.

```
MoxaServer U2.00
-----
[Mode] Line m0dem Welcome_MSG Quit
Examine/modify the operation mode of async ports
ESC: back to menu Enter: select

Port Application Mode Description/more setting
01 [Dialin/out ] [PPP ] [Point-to-Point Protocol ]
02 [Dialin/out ] [SLIP ] [Serial Line Internet Protocol ]
03 [Dialin/out ] [DYNAMIC ] [Auto Term/SLIP/PPP identification]
```

4. Dynamic **Description/More Setting** window.

Select **yes** to enable **TERM_BIN**, **PPPD**, and **SLIPD** modes.

```

+-----+
|          Enable  Detail-setting |
| TERM_BIN mode [yes] [Term parameters] |
| PPPD mode    [yes] [PPP parameters]   |
| SLIPD mode   [yes] [SLIP parameters]  |
+-----+
| Authentication type  [none ] |
+-----+

```

Setting	Value	Notes	Necessity
TERM_BIN mode	YES/NO	To enable Binary Terminal connection	Optional
PPPD mode	YES/NO	To enable PPPD connection	Optional
SLIPD mode	YES/NO	To enable SLIPD Terminal connection	Optional
Authentication type	None/local/server	None: No authentication is required Local: Check ID according to User_table in SERVER MENU . You will need to set user's information later in this chapter. Server: Check ID according to external RADIUS Server	Optional

5. Term parameters

Open the **Detail-setting** window to set more parameters (if necessary).

```

Quit key          : [^E]
Auto-link protocol : [none ]
Telnet TCP port   : [23 ]
Primary host IP   : [
Secondary host IP : [
]
Auto-login prompt : [ogin:
Password prompt   : [assuord:
Login user name   : [
Login password    : [
]
Terminal type     : [ansi ]
Inactivity time   : [ 0n]
Authentication type : [none ]
TCP alive check time: [ 0 ] minutes

```

Setting	Value	Notes	Necessity
Quit key	^E	Defines the Quit key used to disconnect the link between the current terminal session and the remote host.	Optional
Auto-link protocol	None/Telnet/Rlogin	[None] Do not connect to host automatically. [Telnet] Connects to host automatically with Telnet [Rlogin] Connects to host automatically with Rlogin	Optional
Telnet TCP port	23	Enter a number or leave the space blank. If not specified, a default port 23 is used. For example, if you want to use Telnet without a TCP port number, use 23.	Optional
Primary host IP	IP address or the name defined in the [Host] table	If specified, it designates a 'permanent' host to which the terminal will always be connected.	Optional
Secondary host IP	IP address or the name defined in the [Host] table.	If specified, it designates a secondary 'permanent' host to which the terminal will be connected.	Optional
Auto-login prompt	ogin:	Send ID information when receiving this prompt. Since some prompts use "Login" and others use "login", the prompt detection is defined as "ogin:".	Optional
Password prompt	assword:	Send Password information when receiving this prompt. Since some prompts use "Password" and others use "password", the prompt detection is defined as "assword:".	Optional
Login user name	ID	ID information	Optional
Login password	Password	Password information	Optional
Terminal type	Ansi	Terminal type for outgoing connection	Optional
Inactivity time	0/5/10/20/30/60 minutes	Idle time setting for disconnection 0 min means no disconnection	Optional
TCP alive check time	0-99 minutes	Specify the time slice for checking whether the TCP connection is alive. If no response, CN2500 will reset the port and disconnect the original connection	Optional

6. PPP parameters

Open the **Detail-setting** window to set more parameters (if necessary). Destination IP is required.

```

-----
| Enable  Detail-setting |
| TERM_BIN mode [yes] [Term parameters] |
| PPPD mode  [yes] [PPP parameters] |
| SLIPD mode  [yes] [SLIP parameters] |
|-----|
| Authentication type [none ] |
|-----|
| Destination IP addr : [ ] |
| Source IP address  : [ ] |
| IP netmask         : [ ] |
| TCP/IP Compression : [no ] |
| Inactivity time    : [ 0m] |
| Link quality report : [no ] |
| Outgoing PAP ID    : [ ] |
| PAP password       : [ ] |
-----

```

Setting	Value	Notes	Necessity
Destination IP addr	IP address for the remote Dial-in user	DO assign an IP address for the remote user.	YES
Source IP address	IP address for the port	Async Server automatically assigns IP address for the port. Recommend: Blank	Optional
IP netmask	IP netmask	Async Server automatically assigns "255.255.255.255" IP netmask for the port. Recommend: Blank	Optional
TCP/IP Compression	YES/NO	Depends on remote user's application request for compression.	Optional
Inactivity time	0/5/10/20/30/60 minutes	Idle time setting for disconnection. 0 min means no disconnection	Optional
Link quality report	YES/NO	If you have software to collect the link quality information, choose YES.	Optional
Outgoing PAP ID	ID	Dial out user/account ID information	Optional
PAP password	Password	Dial out user/account password	Optional

7. SLIP parameters

Open the **Detail-setting** window to set parameters (if necessary). Destination IP is required.

```

-----
|          Enable  Detail-setting          |
| TERM_BIN mode [yes] [Term parameters]  |
| PPPD mode    [yes] [PPP parameters]    |
| SLIPD mode   [yes] [SLIP parameters]    |
|-----|
| Authentication type [none ]            |
|-----|
| Destination IP addr : [ ]              |
| Source IP address  : [ ]              |
| IP netmask         : [ ]              |
| TCP/IP Compression : [no ]            |
| Inactivity time    : [ 0m]            |
|-----|

```

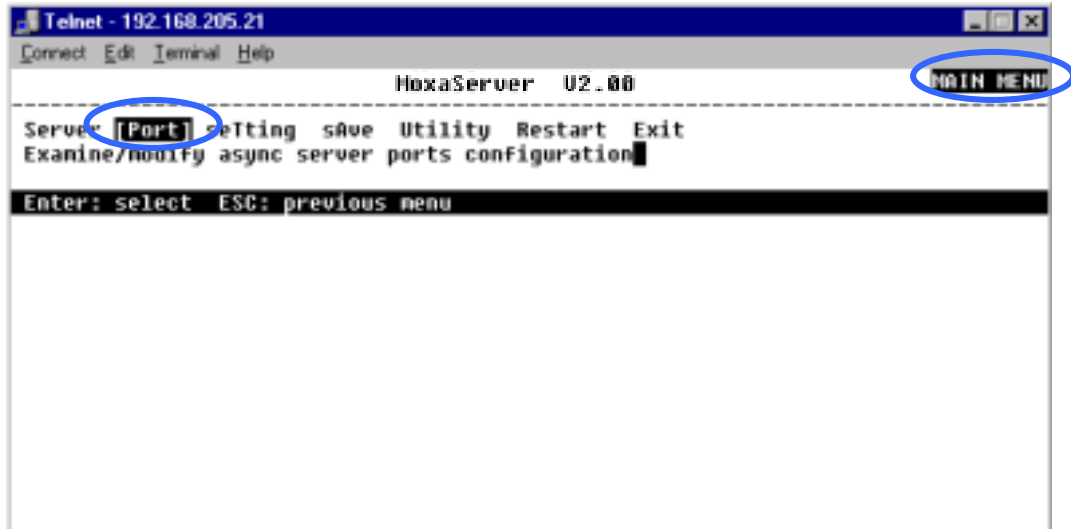
Setting	Value	Notes	Necessity
Destination IP addr	IP address for the remote Dial-in user	DO assign an IP address for the remote user.	YES
Source IP address	IP address for the port	Async Server automatically assigns IP address for the port. Recommend: Blank	Optional
IP netmask	IP netmask	Async Server automatically assigns "255.255.255.255" IP netmask for the port. Recommend: Blank	Optional
TCP/IP Compression	YES/NO	Depends on remote user's application request for compression.	Optional
Inactivity time	0/5/10/20/30/60 minutes	Idle time setting for disconnection. 0 min means no disconnection	Optional

8. Repeat the above steps to set all Dynamic ports.
9. Press **[Esc]** to go back to **PORT MENU**.

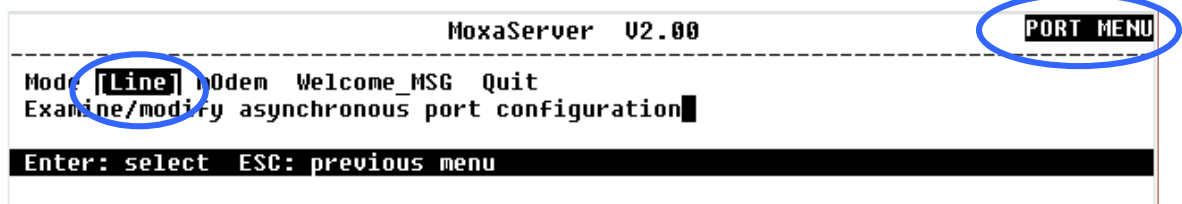
Configure port connection setting— Port Menu [Line]

In **PORT MENU [Line]**, you can choose line settings for your specific modem.
Refer to your modem's manual to determine which parameter settings to use.

1. In **MAIN MENU**, use the arrow keys to select **Port** for port setting, and then press **[Enter]**.



2. In **PORT MENU**, select **Line** for application setting and press **[Enter]**.



3. Specify modem settings

```

MoxaServer V2.00
-----
Mode [Line] m0dem Welcome MSG Quit
Examine/modify asynchronous port configuration

ESC: back to menu Enter: select

Port  Speed      Bits  Stop  Parity  TxFIFO  RTS/CTS  XON/XOFF  Discon. ctrl
01    [115.2K]    [8]   [ 1 ] [none]  [yes]   [yes]    [no ]    [none ]
02    [115.2K]    [8]   [ 1 ] [none]  [yes]   [yes]    [no ]    [none ]
03    [115.2K]    [8]   [ 1 ] [none]  [yes]   [yes]    [no ]    [none ]
04    [115.2K]    [8]   [ 1 ] [none]  [yes]   [yes]    [no ]    [none ]
05    [115.2K]    [8]   [ 1 ] [none]  [yes]   [yes]    [no ]    [none ]
06    [115.2K]    [8]   [ 1 ] [none]  [yes]   [yes]    [no ]    [none ]
07    [115.2K]    [8]   [ 1 ] [none]  [yes]   [yes]    [no ]    [none ]
08    [19200 ]    [8]   [ 1 ] [none]  [yes]   [yes]    [no ]    [DCD-off ]
09    [115.2K]    [8]   [ 1 ] [none]  [yes]   [yes]    [no ]    [none ]
10    [115.2K]    [8]   [ 1 ] [none]  [yes]   [yes]    [no ]    [none ]
11    [115.2K]    [8]   [ 1 ] [none]  [yes]   [yes]    [no ]    [none ]
12    [115.2K]    [8]   [ 1 ] [none]  [yes]   [yes]    [no ]    [none ]
13    [115.2K]    [8]   [ 1 ] [none]  [yes]   [yes]    [no ]    [none ]
14    [115.2K]    [8]   [ 1 ] [none]  [yes]   [yes]    [no ]    [none ]
15    [115.2K]    [8]   [ 1 ] [none]  [yes]   [yes]    [no ]    [none ]
16    [115.2K]    [8]   [ 1 ] [none]  [yes]   [yes]    [no ]    [none ]

```

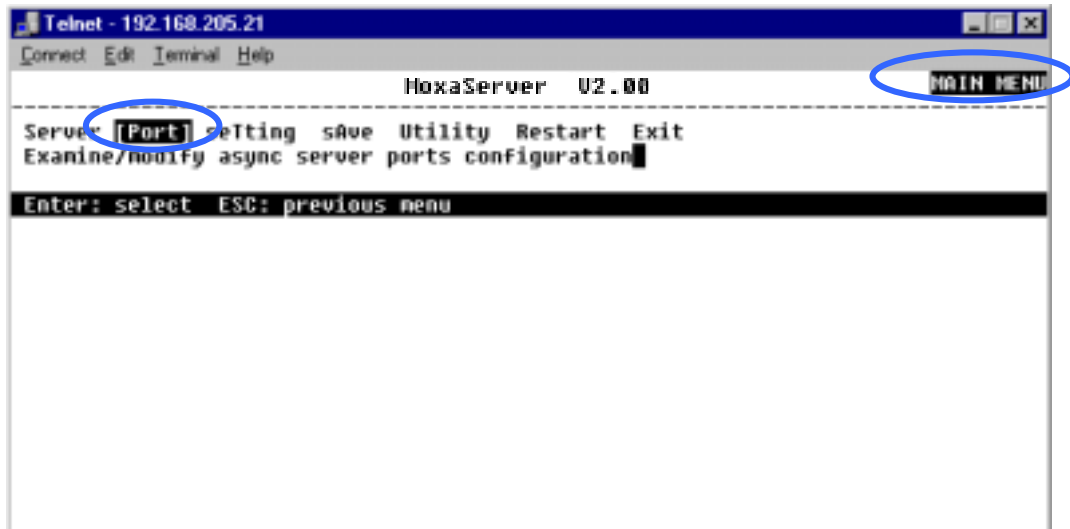
Setting	Value	Notes
Speed	50-230.4 Kbps	Baud rate
Bits	5/6/7/8	Data bit
Stop	1/1.5/2	Stop bit
Parity	None/even/odd	Parity check
TxFIFO	Yes/No	FIFO setting. Default is Yes
RTS/CTS	Yes/No	Hardware flow control
XON/XOFF	Yes/No	Software flow control
Discon. Ctrl	DSR-off, DCD-off and none	Disconnection condition when DSR or DCD signal is off

4. Repeat the above steps to set all modem lines.
5. Press [Esc] to go back to **PORT MENU**.

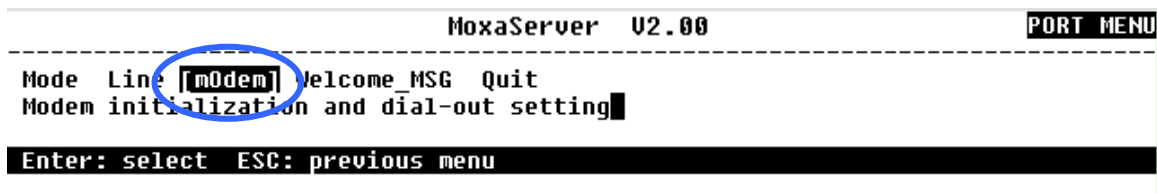
Configure modem initialization— Port Menu [Modem]

In **PORT MENU [Modem]**, set modem dial-out initialization and dial-out phone number.

1. In **MAIN MENU**, move arrow key to select **Port** for port setting and press **[Enter]**.



2. In **PORT MENU**, select **mOdem** for application setting and press **[Enter]**.



3. Specify settings

```

MoxaServer  U2.00
-----
Mode Line [mOdem] Welcome_MSG Quit
Modem initialization and dial-out setting
ESC: back to menu  Enter: select

Port Enable Initialize Dial Up Phone Number
01 [yes] [AT&S0=1 ] [ATD ] [ ]
02 [no ] [AT ] [ATD ] [ ]
03 [no ] [AT ] [ATD ] [ ]
04 [no ] [AT ] [ATD ] [ ]
05 [no ] [AT ] [ATD ] [ ]
06 [no ] [AT ] [ATD ] [ ]
07 [no ] [AT ] [ATD ] [ ]
08 [yes] [AT&S0=1 ] [ATD ] [ ]
09 [no ] [AT ] [ATD ] [ ]
10 [no ] [AT ] [ATD ] [ ]
11 [no ] [AT ] [ATD ] [ ]
12 [no ] [AT ] [ATD ] [ ]
13 [no ] [AT ] [ATD ] [ ]
14 [no ] [AT ] [ATD ] [ ]
15 [no ] [AT ] [ATD ] [ ]
16 [no ] [AT ] [ATD ] [ ]

```

Setting	Value	Notes
Enable	YES/NO	Enable modem settings
Initialize	String	Set modem initial string, for example, AT&S0=1 is for auto-answer.
Dial Up	String	Dial-up AT command
Phone Number	Number	Set the number you use to dial out



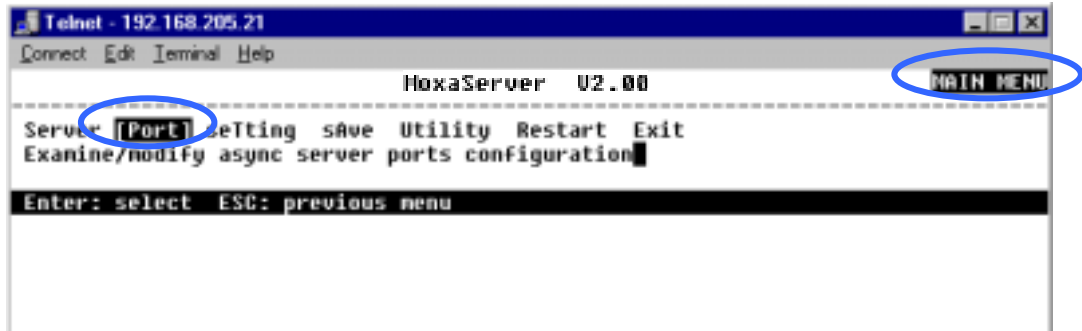
*Note: The **Dial Up** and **Phone Number** settings are only valid under PPP/SLIP mode.*

4. Repeat the above steps to set all modem initializations.
5. Press [Esc] to go back to **PORT MENU**.

Optional welcome message— Port Menu [Welcome_MSG]

In **PORT MENU [Welcome_MSG]**, set welcome message to greet dial in users

1. In **MAIN MENU**, move arrow key to select **Port** for port setting and press **[Enter]**.



2. In **PORT MENU**, select **Welcome_MSG** for application setting and press **[Enter]**.



3. Select **YES** to edit welcome message.
4. Press **[Esc]** to go back to **PORT MENU**.

Optional local user information— Server Menu [User_table]

In **Server Menu [User_Table]**, set local user authentication information. If you set **Incoming PAP check** or **Authentication type** as **Local** instead of **Server**, you have to set **[User_table]** for user authentication. You can also activate the call-back function under the User-Table.

1. In **MAIN MENU**, select **Server**.

```
MoxaServer V2.00 MAIN MENU
-----
[Server] Port setting save Utility Restart Exit
Examine/modify async server node/table configuration
Enter: select ESC: previous menu
```

2. In **SERVER MENU**, select **User_table**

```
MoxaServer V2.00 SERVER MENU
-----
Info. Adv. Host_table Route_table [User_table] Quit
Examine/modify the user/password table
Enter: select ESC: previous menu
```

3. Use the arrow keys to position the cursor and then input user name and password. If you want to activate the automatic call back function, input the user phone number. CN2500 is able to store information for up to 64 users.

```
MoxaServer V2.00
-----
Info. Adv. Host_table Route_table [User_table] Quit
Examine/modify the user/password table
ESC: back to menu Enter: select

Entry  User name      Password      Phone number
01     [ ]            [ ]           [ ]
02     [ ]            [ ]           [ ]
03     [ ]            [ ]           [ ]
04     [ ]            [ ]           [ ]
05     [ ]            [ ]           [ ]
06     [ ]            [ ]           [ ]
```

4. Press **[Esc]** to return to **MAIN MENU**.

Save

1. Press [Y] to save all new settings when exiting **PORT MENU**.

```
MoxaServer  U2.00                                PORT MENU
-----
[Mode] Line m0den Welcome_MSG Quit
Examine/modify the operation mode of async ports
Enter: select ESC: previous menu

Warning !!!
You had modified the configuration without saving.
Would you save it now ?
      'Y': yes   'N': no
```

2. You may also save later. In **MAIN MENU**, select **sAve** to save all new settings, and then press [Enter] to confirm.

```
MoxaServer  U2.00                                MAIN MENU
-----
Server Port setting [sAve] Utility Restart Exit
Save current configuration to Flash ROM
Enter: select ESC: previous menu

-----
[Enter to update, other key to cancel]
-----
```

Restart

1. In MAIN MENU select **Restart**.

```
MoxaServer 02.00 MAIN MENU
-----
Server Port setting save Utility [Restart] Exit
Restart the whole system or selected async ports
Enter: select ESC: previous menu
```

2. Select **System**, and then press [Enter] to continue.
3. The system will restart and the Telnet/Console session will terminate.

```
MoxaServer 02.00
-----
[System] Port Quit
Restart the Async Server
ESC: back to menu Enter: select

+-----+
| Warning !!! |
| Restart system will disconnect all ports and clear all status value |
| Enter: continue ESC: cancel |
+-----+
```